

# Play & Learn Outdoors

from the canopy experts

**able**  
canopies  
& outdoor projects

Issue 3.1

December 2023

*Fun Ideas to Expand a Safe Learning Environment for Your School*

## How to Care for Your Canopy in the Snow

Page 3

## NATURE IN WINTER

and How You  
Can Use it in  
Lessons

Page 15

## OUTDOOR ART LESSON IDEAS

Page 12

**Enhancing  
School  
Environments  
with  
Canopies**

Page 16

**Plus, so much more including lots of  
inspiration for your outside area.**



# WELCOME TO THE DECEMBER EDITION OF PLAY & LEARN OUTDOORS

December seems to have appeared out of nowhere and before you know it, you will be taking a well deserved festive break.

I'm sure the last few months have been hectic with the usual running of the school, plus your Christmas fundraising events. So if you haven't had much time to plan ahead for the new year, don't worry, we have been busy gathering ideas and inspiration to help you out.

This months edition of P&LO therefore introduces you to how you can raise cash from trash, encourage pupils to walk to school, discover outdoor art activities, how nature can be used in your lessons this winter and lots of canopy and outdoor classroom inspiration.

When you get a chance, take a

break, sit back, relax with your favorite drink and have a flick through this edition of P&LO. Hopefully you'll be able to take some ideas back to the classroom.

If you enjoy reading P&LO, why not pass a copy or two onto your colleagues to also enjoy? If they would like to receive their own copies, email us at: [marketing@ablecanopies.co.uk](mailto:marketing@ablecanopies.co.uk) and we'll add them to the list.

Enjoy the winter and we'll be back in the spring for more ideas and inspiration.

Best Wishes

**Tracy Meakins**  
Managing Director



## Competition Time

To add a little jingle to this months newsletter, we have hidden a bookish snowman somewhere in this edition of P&LO.

If you find him, email [marketing@ablecanopies.co.uk](mailto:marketing@ablecanopies.co.uk) with the page number that he's on, to be in with a chance of winning one of five £50 book vouchers for your school.

### Terms and Conditions:

1. How to enter: Find the image of a snowman holding a book as pictured above, also hidden elsewhere within this newsletter, email [marketing@ablecanopies.co.uk](mailto:marketing@ablecanopies.co.uk) with the page number that he is on (excluding page number 2)
2. Closing date is 11.59pm on 31st January 2024.
3. Prize details: You can win one of five £50 book vouchers.
4. Winners will be contacted week commencing Monday 5th February 2024.
5. All entrants will be added to a prize generator that will randomly select five winners
6. Only one book voucher can be won per school/ nursery/ academy/ college.
7. You must work for a school/ academy/ nursery/ college.
8. No purchase is necessary.

## CONTENTS

Page 3	Important: How to Care for Your Canopy in the Snow
Page 4	Our Festive Opening Hours
Page 5	An End of Year Thank You from Able Canopies
Page 6-7	Case Study: Lambourne Primary School in Essex
Page 8	500 Crisp Packets Saved from Landfill
Page 9	Encourage Students to Walk or Cycle to School
Page 10-11	Introducing a Brand New Solar Canopy for Schools
Page 12	Outdoor Art Ideas for Schools
Page 13	Essential Canopy Gutter Maintenance
Page 14	Exploring the Advantages of Timber Canopies
Page 15	How Nature in Winter Can be Used for Learning
Page 16-17	Enhancing School Environments with Canopies
Page 18-19	A Selection of Our Recent Canopy Installations



# SNOW IS FALLING ALL AROUND

## \*Important\* Canopy Maintenance During Snowfall

Many parts of the UK have been experiencing snow recently with more on the way. And even though we've only experienced a hard frost here at Able Canopies HQ, we wanted to make sure you know how to look after your canopy in the event of a snowfall in your area.

As with most situations in commercial settings, it's important to take precautions and keep your canopy clear of snow, so here's a little reminder of how you can look after your canopy or shade structure.

All our structures are fully tested to exacting load calculations however, if snow and ice is allowed to build up on your structure it will be subjected to a higher than average snow load, which could put excess strain on the structure.

### Canopies in the Snow

It is important to remove snow from the roof of your canopy. A build-up of heavy snow on your canopy will cause excess strain on the structure and we advise that the snow is removed regularly. The snow can be easily removed with a soft,

long handled broom.

Please ensure the correct access equipment is used when clearing snow from any of our canopy structures.

### Tensile Fabric Structures and Shade Sails in the Snow

If snow is left to build up on your shade sail cloth, it can cause strain on the fixings and damage to the cloth, causing it to sag due to the additional weight.

As soon as snow starts to build up, it is strongly advised that you push a soft broom underneath the cloth of your structure and push the snow onto the ground. Please ensure no one is standing nearby as falling snow could fall onto them. This simple exercise can be completed with a soft, long handled broom. A build-up of heavy snow on your fabric structure will cause excess strain and we recommend that the snow is removed regularly.

### Canopy Guttering Maintenance

Don't forget to regularly check and clear away any build-up of leaves and other debris which has fallen in to the guttering – particularly during the autumn and

winter months. It is also important to clear the snow from your canopy guttering to keep the guttering draining correctly and to reduce any strain on guttering fixings caused by the weight of the snow.

Our customer's health and safety is of paramount importance to us, please ensure you take the necessary safety precautions when attempting to clear snow from your structure. If you have any questions or if you are unsure about how to maintain your canopy or tensile structure in extreme weather please call us on **0800 389 9072** or email us: **sales@ablecanopies.co.uk**





# OUR FESTIVE OPENING HOURS

Somehow December has sneaked up on us yet again, and it's therefore time to share our festive opening hours with you. This year we will be open as until Friday 22nd December and will then be closed until Tuesday 2nd January 2024.

We'd like to take this opportunity to thank you for

your custom over the years if you are an existing customer, your consideration if you are thinking of purchasing a canopy from us, and your support for following us and recommending us to others.

2023 has been a year full of many exciting canopy projects as well as many functional

shade and shelter solutions; keeping the UK dry and comfortable in mild as well as inclement weather conditions.

Here's to 2024, may the year ahead be full of joy, new opportunities, and growth.

Here's our Christmas opening hours listed for clarification:

**Friday 22nd December: 8.30am – 1pm**

**Saturday 23rd December: Closed**

**Sunday 24th December: Closed**

**Monday 25th December: Closed**

**Tuesday 26th December: Closed**

**Wednesday 27th December: Closed**

**Thursday 28th December: Closed**

**Friday 29th December: Closed**

**Saturday 30th December: Closed**

**Sunday 31st December: Closed**

**Monday 1st January: Closed**

**Tuesday 2nd January: 8.30 – 5.30pm**





## Seasons Greetings from all at Able Canopies



As Christmas gets more closer,  
Our thanks we'd like to say,  
To each and every one of you,  
For encouraging outdoor play.

We hope that your canopy,  
Provided lots of space,  
Encouraging the children,  
And see their smiley face.

We wish you the best at Christmas,  
And the New Year too,  
A big warm thank you,  
From Able to all of you.

- Tracy Meakins, Managing Director,  
Able Canopies Ltd.

We hope you have the most magical Christmas, enjoy your well-deserved  
break and enter a new year full of good health, happiness and growth.



# CASE STUDY: LAMBOURNE PRIMARY SCHOOL

**Project Location:** Lambourne Primary School, Essex

**Client:** Epping Forest Schools Partnership Trust

**Contractor:** Marfleet Contractors Limited

**Product:** The Coniston Wall Mounted Canopy

**Size:** 7m x 3.5m

**Frame Colour:** Signal Blue (RAL 5005)

**Polycarbonate Colour:** Clear

**Installation Date:** October 2023



## Brief

Marfleet Construction Limited was working on a project for Lambourne Primary School in Romford, Essex. The school was to undergo classroom alterations and ramp construction, including the demolition of two redundant modular classrooms and associated alterations of the reception playground, scout hut, existing reception classroom, and

library to accommodate three-year groups.

They also required a wall mounted canopy to provide shade and shelter over the new ramp which would also have steps for access to the playground from the existing year 6 classroom.

## Proposal

They had specified our most popular canopy; the Coniston Wall

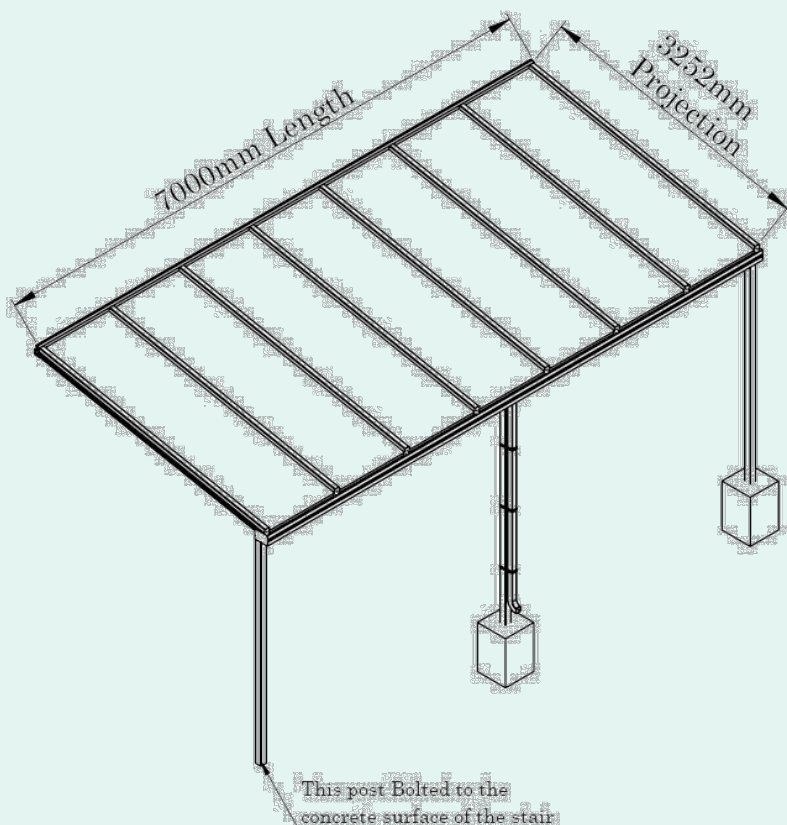
Mounted Canopy within the tender. This meant that when we received the tender, we were able to quickly and easily put forward our best price as we knew exactly what their requirements were.

We therefore sent an estimate to the contractors for a 7m x 3.5m Coniston as requested in Signal Blue (RAL 5005) with clear polycarbonate roof sheets.

## Solution

It was agreed that the canopy posts would be installed near to the edge of the ramp brick wall and run the full 7m length. The foundations would be cast and set by on-site groundworker and would have 400mm length x 400mm width x 600mm deep pad stones, set 150mm below the finished ground level at the lowest level point. One of the posts however would bolt down to the concrete surface on one of the stairs.

Both the contractors and the school were happy with the proposal and proceeded with the order with a schedule of a one day install in October 2023.



## Installation

The canopy was installed on schedule as planned with no issues along the way. It was planned that the canopy would be finished with softplay safety surfacing underneath. However, this was to be installed by the softplay supplier once we left site and we therefore

were not required to make good under the canopy.

The canopy was installed as scheduled within one day on the date specified in October 2023, with all involved being happy with the end result.

We installed the canopy downpipes

as required however, once we installed the canopy, the contractor discovered it would be better to have the downpipe rerouted along a different post. They therefore asked us to supply them with additional downpipe which we were able to do efficiently within approximately one week.



*Left: Before the canopy installation*

*Above: After the canopy installation  
(the groundworks are unfinished in the above photo)*

If you have any existing or up-coming projects similar to the project at Lambourne Primary School, or a completely different design, call us on **0800 389 9072** or email: **[sales@ablecanopies.co.uk](mailto:sales@ablecanopies.co.uk)**



# 500 CRISP PACKETS SAVED FROM LANDFILL

Find out how you can do the same and raise cash for your school at the same time.

Back in July (2023) we wrote a blog post titled Turning Trash into Cash which explained ways we could recycle more in the office. We've been keen advocates of recycling in the office for many years, not only because it's important to us, but also because it helps us to achieve our ISO 14001 certification for environmental awareness.

However, in the summer we were introduced to a fantastic local group that runs a recycling scheme within a school which helps the local community recycle items that can't be recycled in their kerb-side recycling collections. This fantastic group is called Tendring Primary Recycling Scheme (TPRS) and thanks to them, we have been recycling our crisp packets.

As I'm sure you either know from experience or can imagine, offices can be full of naughty treats including the



ever-popular savoury snack – a pack of crisps to keep us going until lunch time. So that being said, we do get through a fair few pack of crisps here at Able Canopies HQ.

While we didn't count the amount of crisp packets we collected from August to October, we have estimated that there were around 500 in total. That's all the crisps packets shown in the image above which is 500 crisp packets that haven't gone to landfill, 500 crisp packets that won't pollute the planet or end up in the ocean, 500 crisp packets that will be recycled to give them a second use.

When the crisp packets are sent off for recycling, they are shredded (or ground) and

then melted and shaped into flakes, pellets or powder, to prepare them for the next stage. They will then be recycled into a number of items such as watering cans, decking, playground surfaces, bins, plastic shipping pellets, and outdoor furniture such as park benches and picnic tables.

So next time you're sitting on a park bench, it could be made from our used and recycled crisp packets!

If you're interested in setting up a recycling point within your school or business or would like to find a local drop off point near to you, visit the Terracycle Website: [www.terracycle.com/](http://www.terracycle.com/)

# HOW TO ENCOURAGE MORE STUDENTS TO WALK OR CYCLE TO SCHOOL

According to studies, 63% of primary and 70% of secondary students are driven to school every day. And yet, walking to school can be a great way for them to get some exercise and reduce their carbon footprint. So how can you encourage more students to walk or cycle to school?

## Invest in Bike Shelters

One of the first things you can do is find a space to install bike shelters on the school grounds. This allows students to safely store their bikes or scooters, keeping them dry and protecting them from UV damage.

Bike shelters can be free-standing or they can be integrated into a school canopy.

In addition, the school can consider offering bike locks and other ways to secure them while the students are in school. Contact Able Canopies to find out more about their bike shelters.

## Participate in Events

Numerous events can help encourage children to walk to school. For instance, there is the 'Walk to School' challenge and walk to school week. Getting children involved in these can help add a reason to get involved, and when doing it as a group, it makes it more relevant to them all.

You can host events during the week to reward students when



they walk to school.

## Teach the Benefits of Walking to School

Students should be taught the benefits of walking to school. These benefits are both for the students themselves and also for the environment. When children are taught these, they tend to want to participate and do the right thing.

And by learning as a group, they can all encourage each other to walk more to school.

## Reward Students

Rewarding students for walking to school can be a great way to encourage them to walk to school. Simple rewards and

prizes such as pins, badges, or treats can be a great way to get more of the students to walk to school.

Or you can reward them by setting a number of times students should walk to school, and when they've reached that number, you host a special cinema day.

## Conclusion

Getting children to walk to school can be very challenging. However, there are ways that teachers and schools can encourage more students to walk to school. Using these can improve students' health and make an impact on the environment.



# UNVEILING THE FUTURE: INTRODUCING THE EDEN SOLAR CANOPY FOR UK SCHOOLS



In an era where sustainability is paramount, the launch of our new product, the Eden Solar Canopy, heralds a groundbreaking solution for schools across the United Kingdom. At Able Canopies Ltd., we are proud to present the Eden Solar Canopy – a game-changer in harnessing renewable energy and providing versatile shading options.

## **The Eden Solar Canopy: A Closer Look at Our Innovation**

The Eden Solar Canopy is a robust and freestanding structure designed to serve a multitude of purposes. It boasts a corrugated steel roof

supported by a sturdy steel frame, ensuring durability and longevity. One notable feature of the Eden Solar Canopy is its adaptability – it can be tailored to suit specific dimensions. Whether you require a canopy for car parking spaces, outdoor dining areas, outdoor classrooms, or event shelters, the Eden Solar Canopy rises to the occasion.

## **Harnessing Solar Energy with the Eden Solar Canopy**

The core feature of the Eden Solar Canopy lies in its ability to harness the power of the sun. While we only supply and install the solar panels on a project by

project basis, we can facilitate the seamless integration of solar panels sourced from alternative suppliers by yourselves. This partnership ensures a smooth transition towards renewable energy.

By installing solar panels on the Eden Solar Canopy, schools can take a significant step towards sustainability. Solar energy not only reduces carbon emissions but also offers potential financial benefits. Here's how:

**Cost Savings:** Solar energy reduces your reliance on traditional electricity sources, leading to lower energy bills over time. This cost-saving measure is



particularly significant for schools with high energy consumption.

**Income Generation:** Depending on the number of solar panels installed and your energy consumption, surplus electricity can be sold back to the grid, turning your solar canopy into a revenue generator. This additional income can be reinvested into your school or company.

**Environmental Impact:** By choosing solar energy, you contribute to a greener environment. Your commitment to renewable energy sources demonstrates your dedication to sustainability, which can

resonate positively with stakeholders and clients.

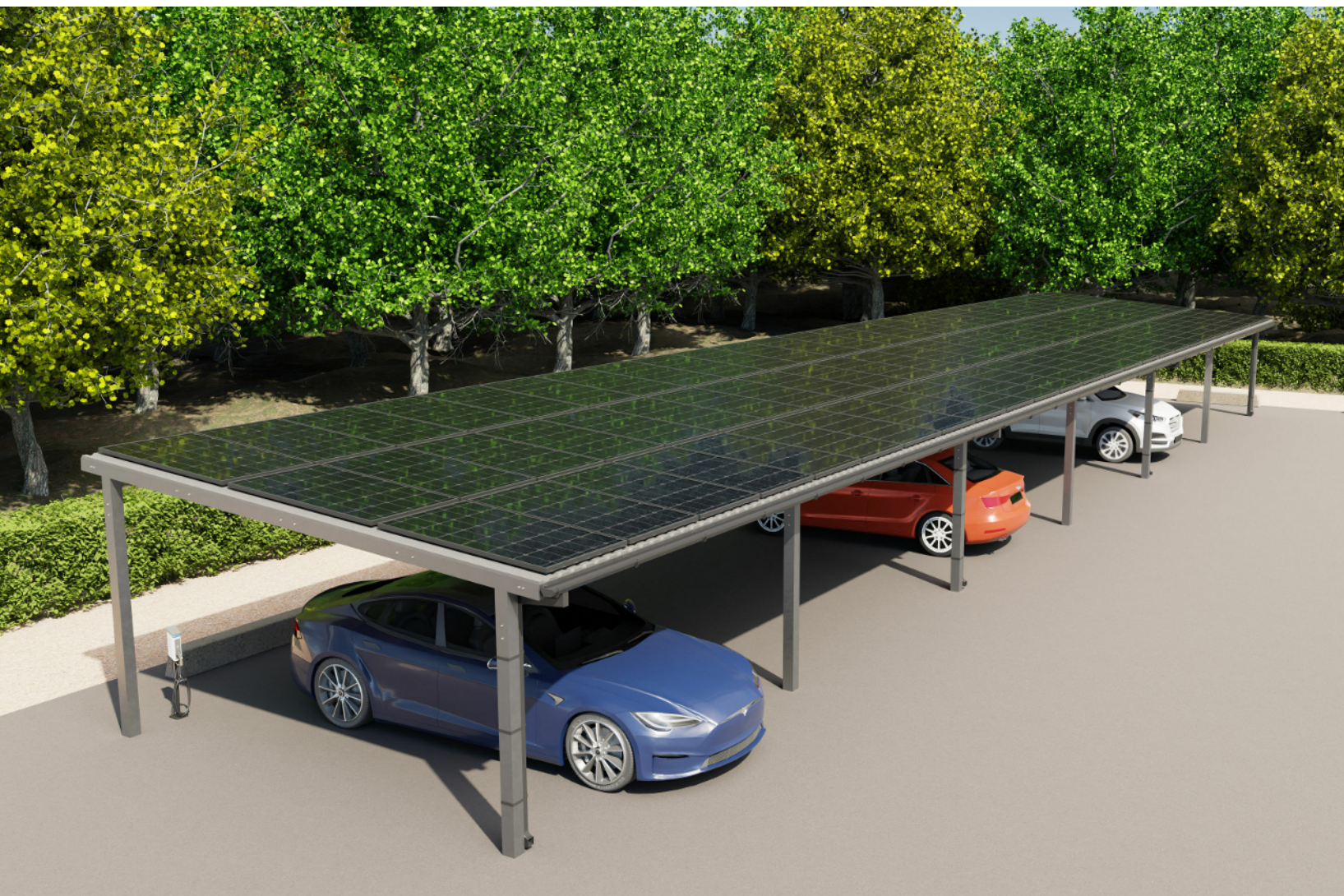
### **Versatility Beyond Solar**

While the Eden Solar Canopy excels at its ability to produce solar energy, its adaptability extends to various applications. It can double as a solar car charging canopy, providing an eco-friendly charging solution for electric vehicles. Furthermore, it serves as an outdoor dining canopy, outdoor classroom, or events shelter, enhancing your outdoor spaces and making them more functional throughout the year.

### **Conclusion: Embrace the Future with the Eden Solar Canopy**

Incorporating the Eden Solar Canopy into your school infrastructure is a forward-thinking investment. It not only provides essential shade and shelter but also empowers you to contribute to a sustainable future while potentially saving on energy costs. At Able Canopies Limited, we are committed to helping you make this transition seamlessly.

Consider the Eden Solar Canopy as more than just a structure; it's a gateway to a greener, more sustainable, and financially sound future for your school. Join the solar revolution and experience the benefits firsthand.





# OUTDOOR ART IDEAS FOR SCHOOLS

Winter is a wonderful time of year to focus on art projects. This is also a great time to get outside for art lessons and find learning opportunities in nature. There are many ways you can take the art curriculum outside into the fresh air. It is well known that learning outdoors can increase retention of facts and is great for wellbeing.

Here are some art lesson ideas for outside lessons.

## Nature

You can incorporate nature into outside lessons. For example, you can collect natural objects to create collages, use them to do printing, or to create patterns. You can use the natural objects to create the art itself or place the art on the object like decorating stones or painting leaves.

Having a canopy to work under can mean that art projects are protected from the elements such as wind and rain.

## Weather

Weather is a great subject for art projects. You can study famous paintings and explore the techniques and styles used. Your

pupils can then use a variety of mediums to recreate weather scenes in their artbooks. If you go outside for these lessons in a variety of weather conditions this can be a great learning experience.

You could also learn about the weather as part of science.

## Patterns

Patterns are important for both art and maths. You can explore different patterns, perhaps by creating patterns by painting stones with dots. You could also create patterns with leaves and sticks on the ground. Allowing the children to express themselves can help grow their confidence. Which will help them perform better in other lessons.

## Big Art

Creating a large piece of artwork as a class can help everyone bond and build teamwork skills. You could spread a large sheet on the ground that everyone can work on or create a mural that the children all work on together.

## Take a Trip

Try getting outdoors somewhere



local to expand your outdoor art projects. You could take a trip to your local beach and create artwork in the sand or visit your local forest to bring the forest into your artwork projects.

## Conclusion

Here are five great ideas to get your class outside and learn art lessons. Outdoor learning is ideal for retention of information and improving health and wellbeing. These art projects will also help improve confidence and teamwork skills. What outdoor learning do your pupils enjoy?



DOWNLOAD YOUR FREE **HOW TO GET THE MOST OUT OF YOUR CANOPY GUIDE:**  
[www.ablecanopies.co.uk/guides/](http://www.ablecanopies.co.uk/guides/)

# ESSENTIAL CANOPY GUTTER INSPECTION AND MAINTENANCE

At Able Canopies Limited, we understand the significance of maintaining a safe and pristine environment for your students and staff. Our commitment is to provide top-quality canopy solutions that elevate your outdoor spaces. We'd like to emphasize a critical aspect of canopy maintenance that is sometimes overlooked - inspecting and cleaning your gutters.

## Why Gutter Maintenance Matters

Regular canopy maintenance is pivotal in ensuring its longevity and early detection of potential issues. Among the often-neglected tasks is the inspection and cleaning of gutters. We once responded to a report of a leaking gutter and discovered more than 40 items obstructing it causing overflow.

## Taking Responsibility for Maintenance

We strongly recommend regular gutter checks to ensure they remain clear of debris. This maintenance may involve working at heights, which can be safely accomplished using powered access equipment such as boom lifts, scaffolding, or ladders. However, it is essential that the maintenance personnel and staff take full responsibility for ensuring proper training safety precautions, and supervision during these tasks.

## Safety First

It is important to note that Able Canopies Limited cannot be held responsible for any injuries resulting from maintenance activities or the use of equipment. Safety should always be the top priority. The image displayed above shows the gutters of a canopy that was installed five years ago at a school in Cardiff. These gutters are currently filled with gravel, grass, and bottles, and the roof has accumulated moss. Following a thorough cleaning and clearance process, the canopy has the potential to regain its original appearance, and the gutters will resume functioning properly.

## Steps for Effective Gutter Maintenance

**1. Clear the Roof:** Begin by removing all debris, including twigs, leaves, or any other objects from the canopy's roof. In winter, it's crucial to eliminate significant snow buildup, as the added weight and the potential impact of falling snow can cause severe damage to gutters. Be particularly cautious with plastic guttering systems to avoid damage while clearing snow and debris.

### 2. Inspect Gutter Runs:

Carefully inspect the gutter runs for any twigs, leaves, stones, or rocks that may cause damage.



Remove these items without applying excessive pressure to the gutter.

### 3. Check Gutter Fittings:

Examine the gutter fittings that connect to the downpipe and remove any debris. It is essential to ensure unobstructed water flow through the system, as blocked water can exert undue pressure and cause damage.

**4. Consider Leaf Guards:** If your canopy is located in an area prone to significant leaf litter, we recommend installing a leaf guard at the top of the downspout.

**5. Final Rinse:** To complete the gutter maintenance, recheck the gutter supports and downspouts. After thorough cleaning, flush the gutters with water. Also, wash the roof with a standard water hose, ensuring effective water flow from the roof into the gutters. This final step is crucial for the efficient functioning of your canopy.

We hope that these guidelines help you maintain your canopies effectively. If you have any questions or require assistance, please do not hesitate to reach out to Able Canopies Limited. Your commitment to canopy maintenance contributes to the safety and longevity of your outdoor spaces.





# EXPLORING THE ADVANTAGES OF TIMBER CANOPIES FOR SCHOOLS: SUSTAINABILITY AND OUTDOOR LEARNING

When it comes to selecting the perfect canopy or shelter for your school premises, the choice of material plays a pivotal role in ensuring that it not only meets functional needs but also harmonizes with the natural environment. Glulam timber canopies and shelters emerge as a remarkable choice, especially in educational settings, owing to their sustainability and seamless integration with outdoor learning spaces.

## Embracing Natural Environments

Glulam timber canopies and shelters are tailor-made for settings in harmony with nature, such as school parks, nature reserves, and wooded areas. Their construction from sustainable timber materials aligns perfectly with the lush, green surroundings. Enhancing the natural beauty of the area, Glulam timber structures blend effortlessly, becoming a part of the landscape rather than an imposition.

## Aesthetic Appeal Meets Durability

These canopies aren't just visually pleasing; they are robust and built to last. Timber canopies provide excellent protection from the elements, creating enchanting sheltered spaces for students and staff to gather, learn, and dine comfortably. Whether it's shielding from the sun's scorching rays or providing a respite from unexpected rain showers, Glulam timber canopies excel in their role as guardians of outdoor spaces.

## The Tarnhow Canopies: A Sustainable Marvel

Our Tarnhow Glulam Timber Canopies, constructed from Glulam timber, epitomize sustainability, environmental friendliness, and innovative design. This modern yet natural design seamlessly integrates with outdoor learning environments, creating a harmonious blend of aesthetics and functionality. The Tarnhow

range offers versatility, with options for both wall-mounted and freestanding canopies. Choose from five distinctive designs, including curved, domed, and mono structures.

## High-Quality Roof Options

Longevity is at the heart of the Tarnhow Glulam canopy range. The canopies are covered with 16mm structured or 5mm solid polycarbonate panels, which offers sturdy, aesthetically pleasing coverings that are low-maintenance. These roofs not only provide protection but also enhance the overall appeal of the canopy.

By choosing a timber canopy, your school or company demonstrates a commitment to sustainability and an appreciation for the beauty of natural materials. Your visitors and staff will relish the opportunity to engage with structures that echo the essence of nature while providing functional outdoor spaces for learning and relaxation.



# HOW NATURE IN WINTER CAN BE USED FOR LEARNING

Winter is a fantastic time for outdoor learning, and even though it's colder, it can still be a wonderful time of year to get outside. If you have an outside canopy to teach lessons under, it can help prevent your lessons from being disrupted by adverse weather. Outside learning can be enhanced by having a sheltered place to teach under.

Much of the curriculum can be taught outside, so here are some fun ideas.

## Design and Technology

Design and technology is a great lesson to teach outside. During winter, with Christmas around the corner, you've got some great opportunities for woodwork lessons. You could try making simple picture frames, clocks, or Christmas decorations for gifts. You could then decorate these with natural items.

You could also combine your woodwork lessons with biology and make some bug houses to place around the school field. If you hold your woodwork lessons under your school canopy, you'll be out of the wind and rain.

## Plants

You can still get ready to grow plants as a project in the autumn. Especially if you have a greenhouse where you can grow salad or herbs. This is a great way to learn about the anatomy of plants, and gardening is a

great skill to develop that many children might not have the opportunity to experience at home.

## Mindfulness

Connecting with nature outside is an important aspect of wellbeing, and you can teach this as a skill in PSHE lessons. Make being outdoors fun, such as winter nature hunts, and encourage the children to connect with their senses. This can have a positive effect on the children's learning for the rest of the day and help them learn some important life skills.

## Nature in Literature

You could encourage your class to use nature in their writing, and they will be inspired by

writing outside. An ideal lesson for this would be learning to write poetry about nature. When they are immersed in nature they will find it much easier to describe. They could also decorate their poems with natural materials or artwork inspired by what they see.

## Conclusion

Learning outside can enhance your pupils' ability to retain information and support their wellbeing. If you have a canopy it can be easier to teach outside as you won't be disrupted by adverse weather and can learn outside throughout the year, especially in winter. What ideas do you have for learning about nature in winter?







# ENHANCING SCHOOL ENVIRONMENTS WITH CANOPIES: TOP 9 REASONS

At Able Canopies Limited, we understand the vital role that shelter structures play in creating safe and enriching outdoor spaces for schools across the UK. The decision to invest in a school canopy, outside classroom, or covered walkway can significantly benefit your pupils and their learning experiences. Let's delve deeper into the ways these structures can transform your school environment.

## **1. Better Outdoor Learning Opportunities:**

Canopies provide an ideal space for interactive and messy activities, enabling fun and engaging lessons. Easy access to the outdoors encourages

physical activity and connects pupils with nature and the environment.

## **2. Protection from Harmful UV Rays:**

Our canopies offer effective protection from the sun's harmful UV rays. They create shaded areas where pupils and staff can enjoy the fresh air while staying safe from sun exposure.

## **3. More Space to Learn:**

Investing in a canopy instantly expands your usable space. It's a cost-effective alternative to building extensions and allows pupils to enjoy outdoor areas year-round, regardless of the weather.

## **4. Improved Play Opportunities:**

Rainy days shouldn't confine pupils indoors. School canopies provide excellent shelter, allowing students to play outside even during wet breaks, reducing restlessness throughout the day.

## **5. Cooler Classrooms:**

By shading windows from direct sunlight, canopies reduce the need for air conditioning. This not only saves energy and reduces your carbon footprint but also creates a more comfortable learning environment. Reduced glare on screens and protection from sun-induced bleaching further enhance the classroom experience.



## **6. Secure 'Time Saving' Storage:**

Our canopies can be equipped with roller shutters, creating secure storage spaces for outdoor furniture or play equipment. This eliminates the need to bring items indoors daily, saving time and effort.

## **7. Designated Safe and Covered Waiting Areas:**

Canopies make excellent designated covered waiting areas for parents, offering shelter from the elements. They also serve as safe waiting areas for children waiting for school buses, away from busy car parks.

## **8. Dry Walkways Between Buildings:**

Covered walkways between buildings keep staff and pupils dry on their way to lessons during wet weather. These walkways also contribute to safety by preventing pupils from running between buildings to avoid getting wet.

## **9. An Attractive Addition to Your Grounds:**

Our canopies not only enhance the functionality of your school but also improve its aesthetic appeal. We offer an extensive range of standard products and can create bespoke designs with a variety of color options to

match your school's unique setting.

Choosing to install a canopy from Able Canopies Limited is a decision that goes beyond providing shelter; it's an investment in the well-being and educational experience of your pupils. The benefits are numerous, from enhancing outdoor learning opportunities to ensuring a safer and more engaging school environment. Discover how teachers, headteachers, and pupils across the UK are already reaping the rewards of our canopy solutions, and consider how your school can benefit too.





# Here's a selection of the canopies we have installed since the last edition of P&LO









# Able Canopies: The Canopy Experts

The Coniston Wall Mounted Canopy with side panels installed at Genesis 1st Safari, Milnrow, Kent November 2023

Canopies & Covered Walkways

Cycle & Waiting Shelters

Shade Sails & Tensile Structures

Awnings & Playground Accessories

External Works: Surfacing, Fencing etc.

Able Canopies are the canopy experts. We provide safe and stylish weather protection that transforms outside spaces.

- Every year we complete hundreds of successful school canopy installations across the UK
- These canopies provide schools with effective shelter & areas for outdoor learning and dining
- We also work with universities and the retail, leisure & hospitality sectors to effectively transform outside space
- Our team of canopy experts work with schools, architects & contractors to ensure on time, on budget, project completion
- To ensure consistent high quality we control the design, manufacture & installation process of our canopies

***"The installation was excellent. Everything was completed by very skilled and considerate workmen on time. I am very impress by both the quality of the product and the installation. I would certainly recommend and use able canopies again superb from Start to finish."***

- Roughlee CE Primary School,  
Lancashire  
Installed October 2023

If you would like a canopy, shelter or shade sail quotation, contact us today:

**Call:** 0800 389 9072 | **Email:** [sales@ablecanopies.co.uk](mailto:sales@ablecanopies.co.uk)

The logo for Able Canopies features a stylized blue roof icon above the word "able" in a bold, lowercase sans-serif font. Below "able" is the word "canopies" in a smaller, lighter blue font, and at the bottom is the tagline "& outdoor projects" in an even smaller, lighter blue font.

able  
canopies  
& outdoor projects